



SEALPROPERTIES
RENTAL MARKET SPECIALISTS

**46 Watt Street
Gateshead
NE8 4TU**



Ground Floor Two Bedroom Flat

Beds : 2

Bath : 1

Parking : On Street



0191 580 5900



WWW.SEALPROPERTIES.CO.UK



INFO@SEALPROPERTIES.CO.UK

Contact Us

Agent Information

Emma

0191 5805900

emma@sealproperties.co.uk

167/169 Saltwell Road

Gateshead, NE8 4TJ

www.sealproperties.co.uk



Scan Me

Scan Me For Property Details



Quote Me

Quote This Reference Number For More Information

SP18100423

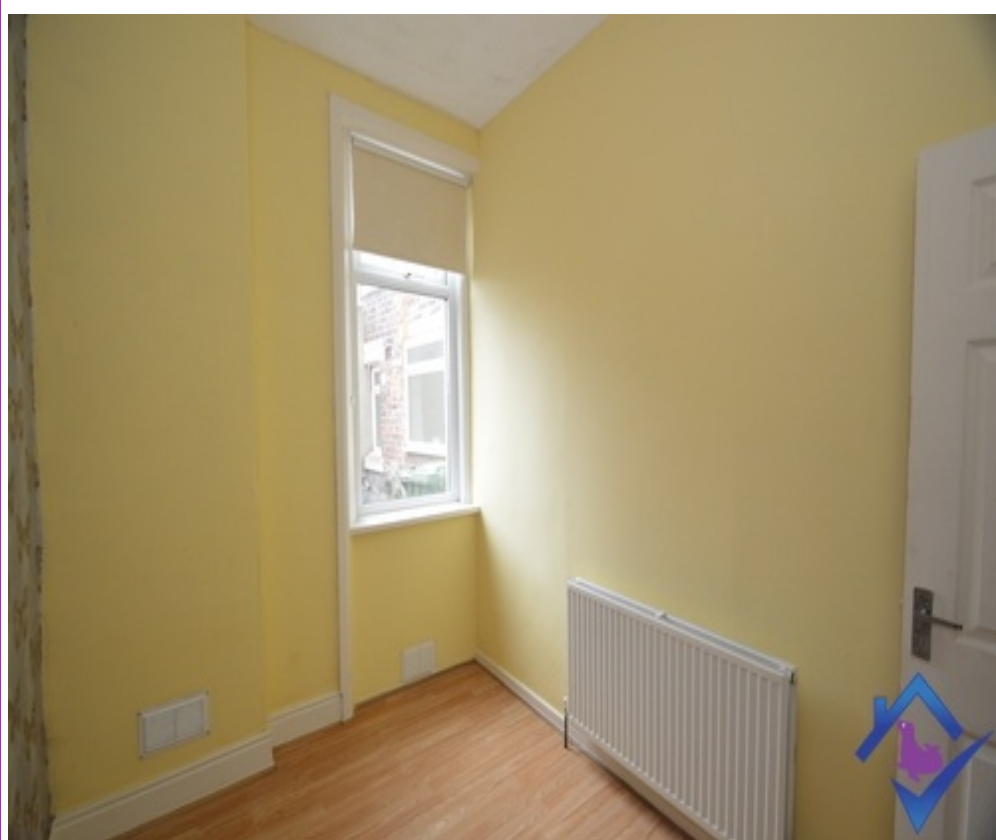
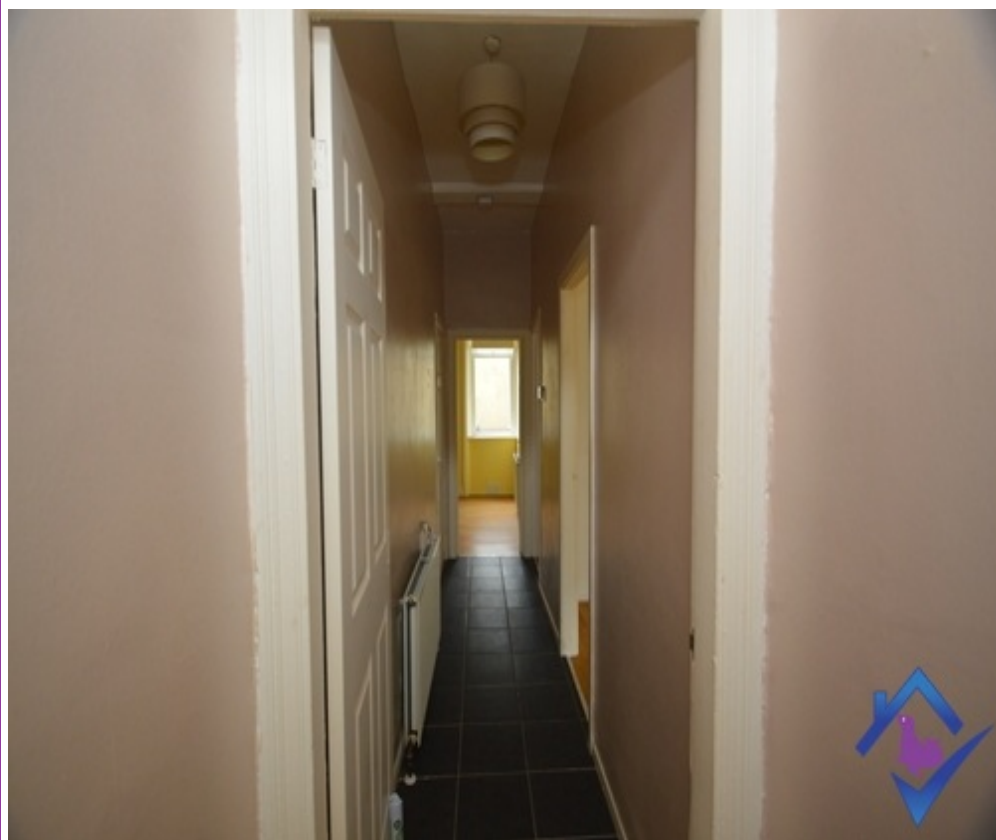
Disclaimer

Whilst every effort is made to ensure the contents of this brochure are accurate and true, the particulars are set out as a general outline for guidance purposes only and do not constitute any part of an offer or contract. Interested Parties should not rely on them as statements of representation of fact, but instead must satisfy themselves by inspection or otherwise as to their accuracy.

A Holding Fee equivalent to one week's rent is payable. Please contact the office for more details.

Energy Performance Certificate (EPC) information is available upon request. Please contact the office.

Gallery



Description

*****OFFER- FIRST MONTH'S RENT HALF PRICE ***** SEAL Properties are delighted to bring to the market this well presented 2 bedroom ground floor flat. The property briefly comprises of entrance hallway, lounge, kitchen, two bedrooms, a bathroom and a small private yard. Viewing is highly recommended due to the convenient location of the property!

Specification

GROUND FLOOR

Entrance Hallway

Upon entering the tiled hallway it leads to the bedrooms and living room.

Lounge

The living room has laminate flooring and is decorated neutrally with a lovely fireplace.

Kitchen

The kitchen has a range of wall and base units with leads off to the bathroom and has access to the yard.

Bedroom One

The master bedroom is a large double room with laminate flooring.

Bedroom Two

The second bedroom is a single sized room with butterfly wallpaper & laminate flooring.

Family Bathroom

The bathroom consists of a basic white 3 piece suite. The bath also has an overhead shower.

OUTSIDE

Rear

To the rear of the property is a small private yard.