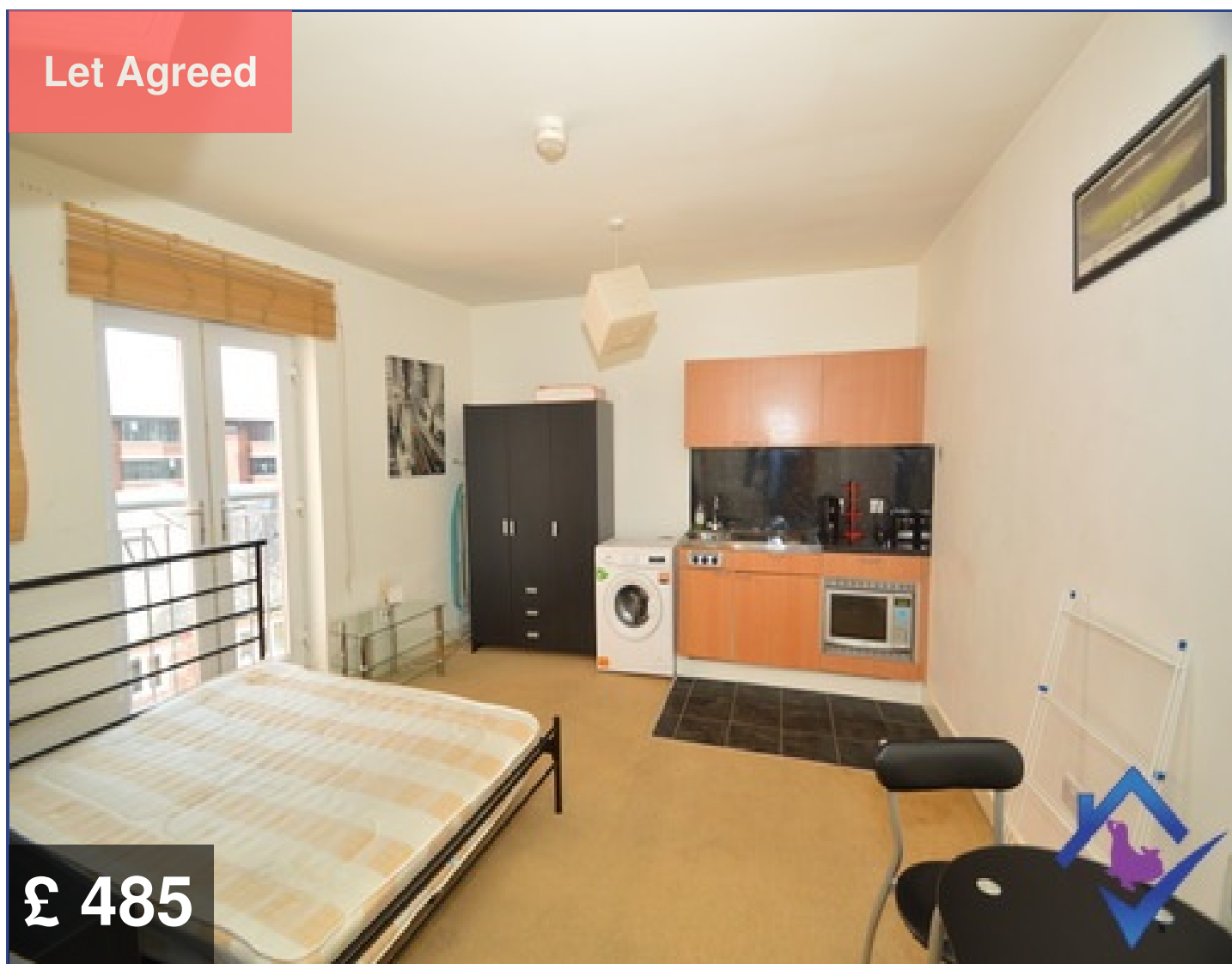




**SEALPROPERTIES**  
RENTAL MARKET SPECIALISTS

**30 Waterloo House  
Thornton Street Newcastle  
NE1 4AP**



**City Centre Studio Flat Ideal for a Professional or Student!**

Beds : 1

Bath : 1

Gas CH : Yes



0191 580 5900



[WWW.SEALPROPERTIES.CO.UK](http://WWW.SEALPROPERTIES.CO.UK)



[INFO@SEALPROPERTIES.CO.UK](mailto:INFO@SEALPROPERTIES.CO.UK)

## Contact Us

### Agent Information

**Emma**

**0191 5805900**

**emma@sealproperties.co.uk**

**167/169 Saltwell Road**

**Gateshead, NE8 4TJ**

**www.sealproperties.co.uk**



### Scan Me

Scan Me For Property Details



### Quote Me

Quote This Reference Number For More Information

**SP18030355**

## Disclaimer

Whilst every effort is made to ensure the contents of this brochure are accurate and true, the particulars are set out as a general outline for guidance purposes only and do not constitute any part of an offer or contract. Interested Parties should not rely on them as statements of representation of fact, but instead must satisfy themselves by inspection or otherwise as to their accuracy.

A Holding Fee equivalent to one week's rent is payable. Please contact the office for more details.

Energy Performance Certificate (EPC) information is available upon request. Please contact the office.

# Gallery



## Description

**SEAL Properties would like to present this studio flat situated in the heart of Newcastle City Centre. The property is within walking distance to an array of shops, restaurants, nightlife and attractions and is also within close proximity from local and national transport links. Early viewing is essential due to popular demand.**

## Specification

### Entrance Hallway

*The entrance to the building is accessed via a code given to residents. The entrance and hallways are communal. Properties can be reached via the stairs or residents lift.*

### Studio Apartment

*The studio provides the occupier with all of the essentials for city centre living. There is ample space provided to house a double bed, sofa and a small dining set. The kitchen is compact but functional, and comes with a microwave, oven/grill/hob, toaster, kettle and a stand alone washing machine. The apartment features a small Juliet balcony.*

### En Suite

*The bathroom consists of a basic 3 piece suite, including a shower. There is also space in the bathroom which has potential to house extra storage or an appliance such as a tumble dryer.*